

LS PRO Controllers

- Used to power LS PRO Flexi-Pads
- Pre-Programmed Frequencies for
 - Health
 - Relaxation
 - Anti-Aging
- 20 minute auto shut off
- Portable for business or personal use



XP1

- Powers 1 Flexi-pad
- Any place, any time
- On the move, travel
- Targeted Hyperbarics

BATTERY OPERATED - 4 HOUR CHARGE



XP3

- Powers up to 3 Flexi-pads
- Health Professionals
- Health at Home



XP6

- Powers up to 6 Flexi-pads
- Health Professionals

RED LIGHT THERAPY : 650nm

Red LED light energy travels through the skin and is absorbed by cytochrome C oxidase within the skin tissue fibroblast cells. At this point, the energy from the red lights transferred into cellular energy. This plays a strong role in the production of collagen which leads to connective tissue repair and regeneration.

potential
BENEFITS:

- Stimulates the viability of fibroblasts
- Collagen production
- Wound healing
- Tissue repair and regeneration

BLUE LIGHT THERAPY : 465nm

Blue LED light energy is a shorter wavelength and does not travel as far deep as red light. Blue light transfers its energy to hemoglobin and melanin chromophores just beneath the skin, and therefore is used more for skin-related disorders.

potential
BENEFITS:

- Acne
- Skin Infections
- Infected Wounds
- Facial rejuvenation
- Skin elasticity

NEAR INFRARED LIGHT THERAPY : 850nm

Near Infrared LED light is composed of longer wavelengths that are able to penetrate much deeper below the skin reaching deep into soft tissues, muscles, joints, and bone. Similar to red light therapy, this causes a transference of light energy (through cytochrome C oxidase) into cellular energy for tissue repair and regeneration. In addition, this range of light energy allows for a quick and strong release of nitric oxide levels, which in turn causes a dramatic rise in local blood flow.

potential
BENEFITS:

- Blood flow
- Tissue repair & regeneration
- Bone, muscle, tendon, ligament
- Pain and inflammation
- Nerve and joint damage
- Muscle relaxation

CONTACT

INTELLIGENT LIGHT THERAPY

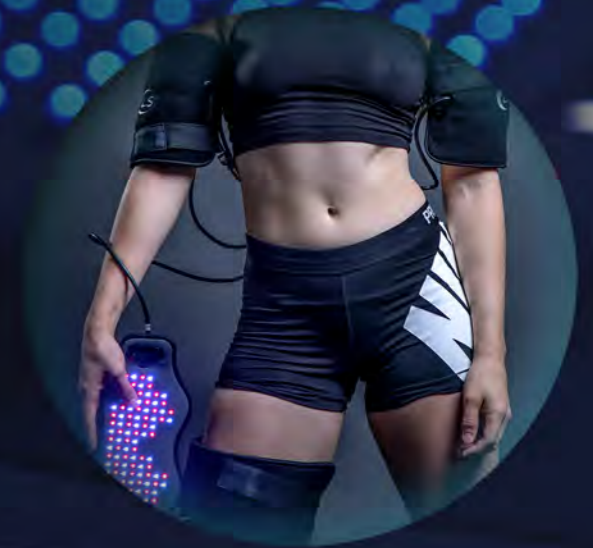


HEALTH
VITALITY
FITNESS

FEEL THE POWER OF LIGHT

Since 1998 LS Pro Systems has been working with worldwide leading experts dedicated to researching and developing the most advanced leading edge health, sports and vitality based light therapy products, designed to specifically accelerate your body's repair process and enhance performance levels in sports and everyday life.

From the USA to the heart of Europe and, Asia LS products are manufactured to our rigorous standards of safety and quality. Used by health and sports professionals as well as for in home health, pain relief and vitality.



WHAT IS LED LIGHT THERAPY?

LED light therapy is a process by which energy is delivered to various parts of the body via Light Emitting Diodes and is absorbed by the cells for therapeutic benefits. The various energy wavelengths penetrate the skin to different depths, providing the energy cells need to activate increased circulation, pain relief and trigger the release of Nitric Oxide, the body's natural vaso-dilator. This brings greater blood flow, oxygen and energy levels to the area being treated.

More blood flow = more Oxygen = Enhanced performance and Accelerated recovery.

LS Pro: ☎ 321.265.9028 📧 LSProSystems.com

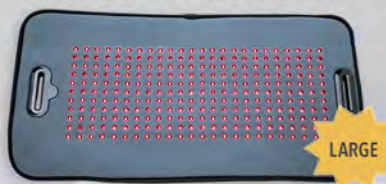
Red/Infrared

The combination of infrared & red produces a powerful synergistic effect in localized tissue and help a multitude of conditions that require stimulation of healing, relief of pain and inflammation, and restoration of function.

MAY HELP WITH

- Improve blood flow (release nitric oxide)
- Tissue repair & regeneration
- Bone, muscle, tendon, ligament
- Neck pain/ Back pain
- Arthritis, sciatica/herniation
- Nerve and joint damage
- Chronic pain disorders
- Enhance tissue performance

LSG 264 General Pad



LARGE

- Largest Pad — Most LEDs
- Flexible wrap around
- 144 Infrared LEDs
- 120 Red LEDs
- 16" L x 8.5" W

LSL 132 Local Pad



MEDIUM

- Medium sized Pad
- Flexible wrap around
- 72 Infrared LEDs
- 60 Red LEDs
- 9.75" L x 7.5" W

LST 90 Target Pad



TARGET

- Medium sized Pad
- Flexible wrap around
- 72 Infrared LEDs
- 60 Red LEDs
- 9.75" L x 7.5" W

USED OVER:

NECK, UPPER/LOWER BACK, ARMS, WRISTS, SHOULDERS, ANKLES, KNEE, LEGS, ABDOMEN, & BACK

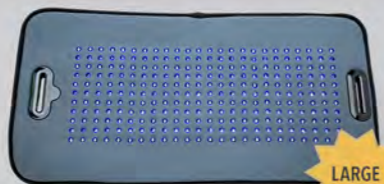
Blue/Infrared

Place over the area of skin/tissue and the infrared light will help provide extra circulation to the area, while the shorter waves of the blue light target the affected tissue.

MAY HELP WITH

- Skin Infections
- Infected Wounds
- Acne and Psoriasis
- Facial rejuvenation
- Skin elasticity
- Scars/Keloids

LSG 264B General Pad



LARGE

- Largest Pad — Most LEDs
- Flexible wrap around
- 144 Infrared LEDs
- 120 Blue LEDs
- 16 L x 8.5 W

LSL 132B Local Pad



MEDIUM

- Medium sized Pad
- Harder to reach areas
- 72 Infrared LEDs
- 60 Blue LEDs
- 9.75" L x 7.5" W

USED OVER:

NECK, UPPER/LOWER BACK, ARMS, WRISTS, SHOULDERS, ANKLES, KNEE, LEGS, ABDOMEN, & BACK

ALL PADS NEED TO BE POWERED BY AN LS CONTROLLER

VELCRO STRAPS CONVENIENTLY ALLOW FOR PADS TO STAY IN PLACE

FLEXIBLE AND CUSTOMIZED PADS DESIGNED FOR THE "PERFECT FIT"

Red/Infrared

CUSTOMIZED PADS DESIGNED FOR THE "PERFECT FIT"

MAY HELP WITH

- Blood Flow Support
- Brain, Memory, Cognition
- Focus/Attention/Concentration
- TBI, Stroke, Autism, Parkinson, Alzheimers

LSH 155 Head Cap



HEAD

- Fits all head sizes
- Flexible wrap around
- 77 Infrared LEDs
- 78 Red LEDs
- 17" L x 15" W

MAY HELP WITH

- Neuropathy
- Pain Relief
- Foot Injuries
- Calf Injuries

LSB 80 Boot/Leg Pad



LEG/FOOT

- Extremely flexible
- 60 Infrared LEDs
- 20 Blue LEDs
- 27.5" L x 9.5" W

Blue/Red

LOOK AND FEEL GREAT

Close your eyes, and feel the energy of "Look and feel great" light being transferred inside of your body

MAY HELP WITH

- Mood
- SAD
- Circadian Rhythm
- Sleep
- Relaxation
- Stress Reduction
- Facial rejuvenation
- Skin Elasticity/collagen
- Scars/aging/wrinkles

LSF 104 Face Pad



FACE

- Fits as an eye mask
- Fits over all faces
- 52 red LEDs
- 52 Blue LEDs
- 4.75" H x 12" W

